

**UMSU'S  
GUIDE  
— TO THE —  
UNI  
VERSE**

## DISCLAIMER

University of Melbourne Student Union (UMSU Inc) has made every effort to ensure that information in this publication is up-to-date at the time of printing, but does not guarantee the accuracy, reliability, completeness or currency of the information. UMSU Inc accepts no responsibility for the results of any actions taken on the basis of information in this publication. Users are advised to seek confirmation of the information from the relevant area of the University of Melbourne. This guide may contain links to external organisations and information. In providing such links, UMSU Inc does not accept responsibility for, nor endorse the content of any linked site.

This guide is published by the General Secretary of UMSU, Yasmine Luu.

## 2017 CONTRIBUTORS

- UMSU student departments
- Student writers Acacia Coates and Claudia Hooper
- Student photographers Mabel Loui and Caleb Triscari
- Staff members from the George Paton Gallery, the Rowden White Library, the Union House Theatre and the Communications & Marketing department





## WELCOME TO THE UNI-VERSE

President & Secretary .....	2
Student Representatives.....	3
SSAF Expenditure .....	4

## GET INVOLVED

Clubs & Societies .....	8
Volunteer.....	9

## COMMUNITIES

Burnley .....	12
Disabilities.....	13
Indigenous .....	14
People of Colour .....	15
Queer .....	16
UMSU International.....	17
VCASA.....	18
Women's.....	19

## SUPPORT

Advocacy.....	22
Edu Academic .....	23
Edu Public.....	24
Info Centre .....	25
Legal.....	26
Mentoring Network.....	27
Welfare .....	28
Handy Links .....	29

## STUDENT LIFE

Activities.....	32
Creative Arts .....	33
Environment .....	34
George Paton Gallery .....	35
Media .....	36
Mudfest.....	37
Rowden White Library.....	38
Union House Theatre.....	39

## HOW TO UNI

Discover Melbourne.....	42
Get Around.....	43
Get Stuff.....	44
Hire Stuff .....	45
Housemates.....	46
Refuel .....	47
Important Dates .....	48
S.O.S. Contacts On Campus .....	50
S.O.S. Contacts Off Campus.....	51



**WELCOME  
TO THE  
UNI-VERSE**



# GREETINGS EARTH HUMAN!

In your hands, you hold a ticket to the universe. So sit back and relax with your University of Melbourne Student Union (UMSU).

As a non-profit spacecraft organisation, run by students, for students, we're the engine that keeps the arts, representation, advocacy and cultural services alive and relevant on campus.

We'll help you launch into the stratosphere and get more out of your time at uni.

You'll meet weird and wonderful people, get involved with far-out adventures and (most importantly) add some fun to all that learning!

Commencing countdown — engines on. Check ignition and prepare for blast off.

10, 9, 8, 7, 6, 5, 4, 3, 2, 1...

LIFT OFF!



[umsu.unimelb.edu.au](http://umsu.unimelb.edu.au)

# WELCOME!

**We're so excited to meet you.**

Your University career is not wholly defined by academia, it's about the experiences and people you meet along the way. That's where we come in!

Here at UMSU, all we want is to celebrate your diversity, passion and enthusiasm.

We are your dedicated student organisation that has great activities whilst also offering support and help when you need it.

**We propose one golden rule for your time here: GET INVOLVED.**

It will be the best decision you ever make.

**Yan & Yasmine  
President & Secretary**

TAKE ME  
TO  
YOUR  
LEADER!

Yan

Yasmine



# STUDENT REPRESENTATIVES

Student representation is all about giving YOU control over your education while ensuring that you've got enough support to score great marks and still have fun in the Uni-verse!

Once you get to know us, you'll see just how passionate UMSU is about you and the community of students here. After all, we've been at it since 1884!

Elections are held in September and all students can cast their vote. It's also a great opportunity for you to step up and run for student office. Through UMSU, you can be the change you want to see in the world.

**Remember, with great power comes great responsibility.**

# UMSU EXPENDITURE OF THE STUDENT SERVICES AND AMENITIES FEE

**TOTAL: \$4,155,050.30**

based on 2016 figures as of 1 December

**As you read this guide, you might find yourself wondering how UMSU provides all these fantastic services.**

Introduced by the then Labor government in 2011, the Student Services and Amenities Fee (SSAF) ensures funding for student services at tertiary institutions in Australia.

It's basically the reason why your campus has such a vibrant, active community.

UMSU receives only a small portion of the SSAF, but we do huge things with it. Over the coming year, we'll be adding stamps to the products and events made possible by the allocation of these funds. That way, you know just how important it is.

Learn more from our FAQ fact or fiction  
[umsu.unimelb.edu.au/ssaf](https://umsu.unimelb.edu.au/ssaf)



# 2016 SSAF EXPENDITURE

38%

## UNIVERSITY OF MELBOURNE

- Melbourne Uni Sport
- Children's Services
- Capital Works Fund
- Students @ Work

40%

## UMSU

15%

## GRADUATE STUDENT ASSOCIATION

7%

## MUSUL

27%

ELECTIONS, INSURANCE, MANAGEMENT, ADMINISTRATION, ETC

18%

ACTIVITIES, EVENTS, LIBRARY

16%

CREATIVE ARTS, THEATRE, GALLERY

15%

ADVOCACY & LEGAL

6%

INTERNATIONAL STUDENTS

5%

CLUBS ADMINISTRATION & GRANTS

4%

WELFARE

3%

STUDENT MEDIA

2%

EDUCATION DEPARTMENT

2%

ORIENTATION VOLUNTEERING

1%

FOOD & DRINKS



**GET  
INVOLVED**



We're by students, for students. That means we want you to beam up and get involved!

## MISSION OBJECTIVES:

With over two hundred clubs and societies affiliated with us, there's a whole galaxy of experiences just waiting for you to jump into.

Join up with a volunteer program to lend a helping hand (or tentacle) and earn some valuable XP for the next stage of life.

Download data on how student representation works, how new life forms are elected to office and learn what a powerful force YOU and your vote can be.



[umsu.unimelb.edu.au](http://umsu.unimelb.edu.au)



Gulsara



Kayley

## CLUBS & SOCIETIES

**We look after over two hundred  
UMSU clubs!**

We're the people to talk to if you have any club related queries. We'll help you start a club, organise events, provide training and anything else you may need!

Level 1, Union House  
8344 4834  
[clubs@union.unimelb.edu.au](mailto:clubs@union.unimelb.edu.au)

[umsu.unimelb.edu.au/clubs](https://umsu.unimelb.edu.au/clubs)



# VOLUNTEER

**Volunteering is a great way to make a difference, meet new friends and connect with others.**

We have a wide range of opportunities for caring, committed people to get involved.

- Destination Melbourne
- Exam Support Stall
- Host Program
- Mentoring Program
- Peer Support Stall
- Student representative departments
- VCE Summer School

[volunteering@union.unimelb.edu.au](mailto:volunteering@union.unimelb.edu.au)

[umsu.unimelb.edu.au/volunteer](https://umsu.unimelb.edu.au/volunteer)



## UNI: THE FINAL FRONTIER

No matter how much of an alien you feel like right now, we are dedicated to providing a safe and inclusive home to protect you from the infinite vacuum of space.

Thankfully, planet UMSU is home to many vibrant communities so you can always find your people.

Whether you want to fight for better representation, change the world or meet others alike, you can phone home to us.



[umsu.unimelb.edu.au](http://umsu.unimelb.edu.au)



Jessica



## BURNLEY

The Burnley Student Association represents the Burnley bunch while organising similar free events and student services on this campus. It's not all about Parkville and Southbank!

Burnley is just a few minutes east of the CBD, near the Yarra River, but once you immerse yourself in our heritage listed botanical gardens you'll forget that you're so close to the city.

### **The grass is greener here!**

[burnleystudentassociation@gmail.com](mailto:burnleystudentassociation@gmail.com)  
[facebook.com/burnleystudentassociation](https://facebook.com/burnleystudentassociation)  
[instagram.com/burnleystudentassociation](https://instagram.com/burnleystudentassociation)

[umsu.unimelb.edu.au/burnley](https://umsu.unimelb.edu.au/burnley)





Cassandra



Alston

## DISABILITIES

### Disability isn't always obvious.

We're here to support you, whether you have

- A mental health condition
- A chronic condition like CFS, fibromyalgia, epilepsy or diabetes
- Hearing, vision or speech difficulties
- Neurodiversity
- Something you're not sure about

We're running many events for people of all levels of ability to learn, hang out, or both!

Level 1, Union House  
disabilities@union.unimelb.edu.au  
facebook.com/umsu.disabilities

[umsu.unimelb.edu.au/disabilities](https://umsu.unimelb.edu.au/disabilities)

Marley



Wunambi



## INDIGENOUS

**We're dedicated to supporting Aboriginal and Torres Strait Islander students throughout uni.**

We work with UniMelb to ensure that the voices of Indigenous students are heard in all aspects of university life.

Get involved

- Indigenous University Games
- Social events
- Under Bunjil
- Social sport with MU Sport
- The Biggest Blackest Show on Radio Fodder

And many more!

Level 1, Union House  
[indigenous@union.unimelb.edu.au](mailto:indigenous@union.unimelb.edu.au)  
[instagram.com/umsu\\_indigenous](https://www.instagram.com/umsu_indigenous)  
[facebook.com/umsu-indigenous](https://www.facebook.com/umsu-indigenous)

[umsu.unimelb.edu.au/indigenous](https://umsu.unimelb.edu.au/indigenous)



## PEOPLE OF COLOUR

We advocate for students of African, Asian, Pacific Islander, Aboriginal, Indigenous, Latinx, Arab, multiracial and other relevant backgrounds.

**We're here to spark discussion, create stronger communities and make a difference.**

Join us with our

- Weekly collective
- Reading groups
- Asylum Seeker Awareness Week
- Film screenings
- Discussion panels

Level 1, Union House

8344 4834

[peopleofcolour@union.unimelb.edu.au](mailto:peopleofcolour@union.unimelb.edu.au)

[facebook.com/umsupeopleofcolour](https://facebook.com/umsupeopleofcolour)

[instagram.com/umsupeopleofcolour](https://instagram.com/umsupeopleofcolour)

[umsu.unimelb.edu.au/peopleofcolour](https://umsu.unimelb.edu.au/peopleofcolour)



Evelyn



Blake

## QUEER

**We're here to support LGBTI students,  
no matter your sexuality or gender.**

Drop by the Queer Space (Level 3, Union House)  
for comfy couches, tea and new friends.

We host

- Weekly free lunches
- Movie nights
- Parties
- Pride Ball

And more!

Level 1, Union House  
[queer@union.unimelb.edu.au](mailto:queer@union.unimelb.edu.au)  
[facebook.com/umsuqueer](https://facebook.com/umsuqueer)  
[instagram.com/umsuqueer](https://instagram.com/umsuqueer)

[umsu.unimelb.edu.au/queer](https://umsu.unimelb.edu.au/queer)



Sander



Marcelo

# UMSU INTERNATIONAL

COMMUNITIES

We're the official representative body for all international students at the University of Melbourne.

**We organise events to help you network, have fun and enhance your uni experience.**

Join us for

- Night Market
- Festival of Nations
- Self Protection and Visa/PR workshops
- International Students Ambassador Program

Plus much, much more!

Level 2, Union House  
8344 4801

[umsuinternational@union.unimelb.edu.au](mailto:umsuinternational@union.unimelb.edu.au)

[facebook.com/umsuintl](https://facebook.com/umsuintl)

[twitter.com/umsuintl](https://twitter.com/umsuintl)

[instagram.com/umsuintl](https://instagram.com/umsuintl)

snapchat @umsuintl

[umsu.unimelb.edu.au/intl](https://umsu.unimelb.edu.au/intl)



Nicholas



## VCASA

Nestled just south of the Yarra lies a haven for arts and culture, VCA Student Association (VCASA).

**Yes, we're a UniMelb campus and we're going to get lit this year.**

When not organising free food and awesome events, we help showcase your works and ensure you're having an awesome time at VCA.

We're basically a fun sized UMSU!  
So, grab a drink and relax — we've got your back.

[vca@union.unimelb.edu.au](mailto:vca@union.unimelb.edu.au)  
[facebook.com/vcastudentsassociation](https://facebook.com/vcastudentsassociation)

[umsu.unimelb.edu.au/vcasa](https://umsu.unimelb.edu.au/vcasa)



Anjana

Hannah

## WOMEN'S

**We strive to make university a safe place, advocate for women students and host fabulous weekly events — of course!**

### Participate

- Women's Collective
- Women's Mentoring
- Women of Colour Collective

### Freebies!

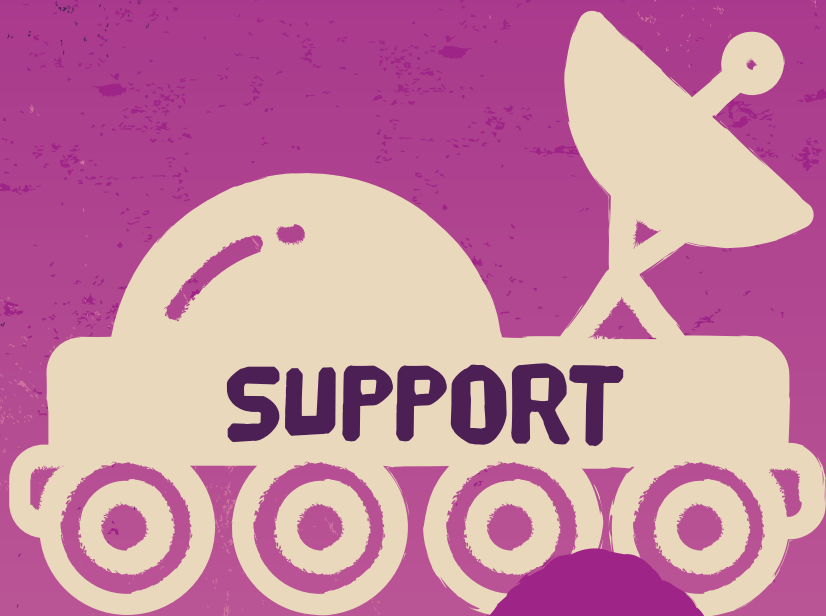
- Women centered books
- Women's health services
- Tampons, pads & safe sex essentials
- Women's Room on Level 1, Union House

### Contribute

- Judy's Punch annual magazine

Level 1, Union House  
womens@union.unimelb.edu.au  
facebook.com/umsuwomens  
instagram.com/umsuwomens

[umsu.unimelb.edu.au/women](https://umsu.unimelb.edu.au/women)



**SUPPORT**





Uni is a tough mission to take on alone, so dock with UMSU's support network every now and then.

If you've fallen out of favour with the University or the Galactic Council, we've got Advocacy & Legal services to get your ship operational again.

Your Education departments are also on hand to take up the fight for you against oppressive overlords who want to destroy the quality of your education.

## WANT YOUR OWN PERSONAL YODA?

Explore the Mentor Network\*, you should. Yes, hmmm.

Plug into your Welfare department matrix and learn some new skills, grab a free breakfast on your way to class or tumble down the wormhole with numerous other fun events and activities.

\*Actual Yodas not guaranteed



[umsu.unimelb.edu.au](https://umsu.unimelb.edu.au)



## ADVOCACY

**The UMSU Advocacy service offers free and confidential advice, advocacy and referrals on a range of issues within the University.**

Get in touch with us if you've been contacted about misconduct or academic progress, if you have a dispute about assessments or another academic issues or need help with special consideration.

To make an appointment please phone or email us.

Level 3, Union House  
8344 6546  
9am to 12pm & 1 to 5pm  
Monday to Friday  
[suashelp@union.unimelb.edu.au](mailto:suashelp@union.unimelb.edu.au)

[umsu.unimelb.edu.au/advocacy](https://umsu.unimelb.edu.au/advocacy)



Caley



Roger

## EDUCATION ACADEMIC

**We're about ensuring that the University is providing accessible, high quality teaching and assessment.**

We advocate for you

- Through our network of representatives on academic boards and committees
- By publishing the Counter Course handbook with honest reviews of university subjects by students like you

On an individual level, we encourage you to contact us if you have a course related problem.

Level 1, Union House  
educationacademic@union.unimelb.edu.au  
facebook.com/umsueducation

[umsu.unimelb.edu.au/educademic](https://umsu.unimelb.edu.au/educademic)



Sinead

Daniel

## EDUCATION PUBLIC

This is the place for debating policy, campaigning for students' rights and being passionate about quality education.

### **We're the link between public policy and YOU.**

Make a difference

- EdPub@Pub nights
- Rallies
- Policy Picnics
- Volunteer with our Policy Engagement Program

And more education events throughout the year!

Level 1, Union House  
educationpublic@union.unimelb.edu.au  
facebook.com/umsueducation  
twitter.com/umsu\_education  
instagram.com/umsu\_edu

[umsu.unimelb.edu.au/edupublic](https://umsu.unimelb.edu.au/edupublic)



## INFO CENTRE

The Info Centre handles over 50,000 enquiries from life forms just like you every Earth cycle!

**If you're ever lost in space, come and speak to the friendly folk here so we can help you get your ship together.**

Union House  
Ground floor (opposite the elevators)  
8.30am to 5pm, Monday to Friday

FBE Building  
Ground floor, 111 Barry St  
9.30am to 4.30pm, Monday to Friday

8344 6966

[umsu.unimelb.edu.au/info](https://umsu.unimelb.edu.au/info)

SUPPORT



## LEGAL

**The UMSU Legal service provides free, confidential and professional legal advice to students at the University of Melbourne.**

We can assist you with

- Consumer matters
- Criminal offenses
- Employment matters
- Infringement notices
- Vehicle accidents

Call our advice line to speak to a solicitor. Alternatively, submit a request for legal assistance through the website and we'll be in touch.

Level 3, Union House  
Advice Line 0468 720 668  
Monday to Thursday, 1 to 4:30pm  
[legal@union.unimelb.edu.au](mailto:legal@union.unimelb.edu.au)

[umsu.unimelb.edu.au/legal](https://umsu.unimelb.edu.au/legal)



## MENTORING NETWORK

**Want to meet more people and make more friends? Feeling a little anxious about starting uni?**

The UMSU Mentoring Network can connect you with experienced fellow students who are enthusiastic about helping you smoothly settle into uni life.

Sign up today by filling out an application on the website!

Level 4, Union House  
[mentoring@union.unimelb.edu.au](mailto:mentoring@union.unimelb.edu.au)

[umsu.unimelb.edu.au/mentor](https://umsu.unimelb.edu.au/mentor)

SUPPORT



Teresa



Ryan

## WELFARE

Hey good looking!

**If you're ever in a tight spot, we'll give you a leg up.**

Low on cash?

- Food bank
- Household help
- Free breakfasts Thursdays 8:30 to 10:30am

Meet people

- Monday Mingle
- Conversation Partners
- Volunteering collective

Keep fit, healthy and safe for free!

- Yoga
- Zumba
- Meditation
- Self defence classes

[welfare@union.unimelb.edu.au](mailto:welfare@union.unimelb.edu.au)

[facebook.com/umsuwelfare](https://facebook.com/umsuwelfare)

[umsu.unimelb.edu.au/welfare](https://umsu.unimelb.edu.au/welfare)



# HANDY LINKS



## Seek Support

- Current Students – [students.unimelb.edu.au](https://students.unimelb.edu.au)
- Stop 1 – [studentcentre.unimelb.edu.au/stop1](https://studentcentre.unimelb.edu.au/stop1)
- Student Connect – [studentconnect.unimelb.edu.au](https://studentconnect.unimelb.edu.au)
- Advocacy – [umsu.unimelb.edu.au/advocacy](https://umsu.unimelb.edu.au/advocacy)
- Legal – [umsu.unimelb.edu.au/legal](https://umsu.unimelb.edu.au/legal)

## Get Settled

- International students – [umsu.unimelb.edu.au/international](https://umsu.unimelb.edu.au/international)
- Cheap eats – [umsu.unimelb.edu.au/getfood](https://umsu.unimelb.edu.au/getfood)
- What's on in Melbourne – [thatsmelbourne.com.au](https://thatsmelbourne.com.au)

## Make Friends

- Clubs & Societies – [umsu.unimelb.edu.au/clubs](https://umsu.unimelb.edu.au/clubs)
- Entertainment – [umsu.unimelb.edu.au/gigs](https://umsu.unimelb.edu.au/gigs)
- Sport – [sport.unimelb.edu.au](https://sport.unimelb.edu.au)

## Find your way

- Info Centres – [umsu.unimelb.edu.au/info](https://umsu.unimelb.edu.au/info)
- Campus maps – [maps.unimelb.edu.au](https://maps.unimelb.edu.au)
- Lost on campus – [lostoncampus.com.au](https://lostoncampus.com.au)

## Stay Safe

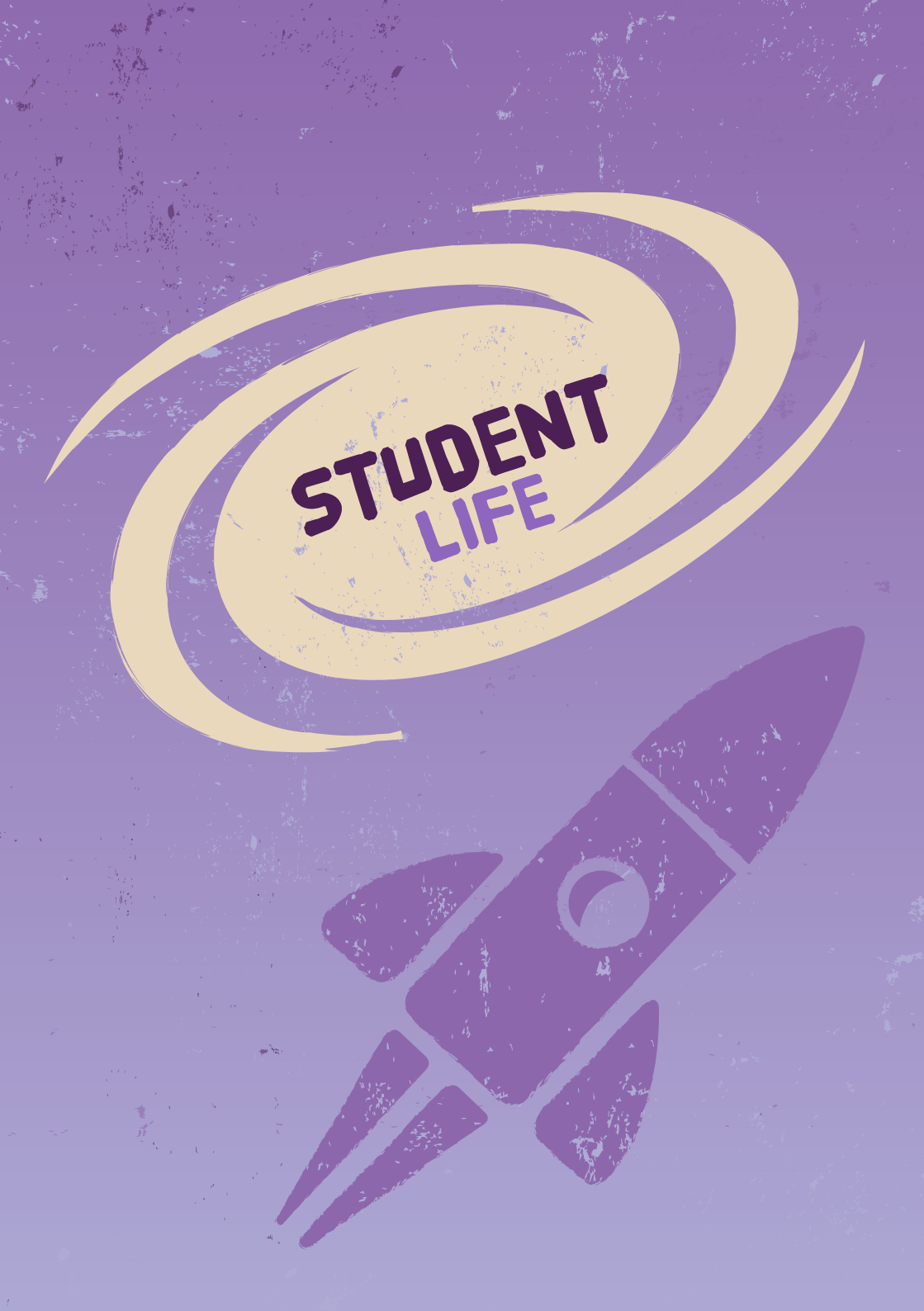
- Safer community app – [safercommunity.unimelb.edu.au](https://safercommunity.unimelb.edu.au)

## Be Green

- Sustainability – [umsu.unimelb.edu.au/sustainability](https://umsu.unimelb.edu.au/sustainability)
- Water fountains – [sustainablecampus.unimelb.edu.au](https://sustainablecampus.unimelb.edu.au)

## Social Media

- All channels – [umsu.unimelb.edu.au/socialmedia](https://umsu.unimelb.edu.au/socialmedia)



**STUDENT  
LIFE**

## THE UNI-VERSE IS DOTTED WITH COUNTLESS BRIGHT STARS, BURNING PROUD AGAINST THE INFINITE BLACKNESS

Here's your chance to shine just like them.

Get ready to blast off into a glittering nebula of events because your Activities department has filled up this Earthyear with parties, gigs and more.

Drop your capsule into Culture HQ and browse the halls of the multiverse's greatest jewels, the Rowden White Library and the George Paton Gallery!

For those of you passionate about ecosystems, find out how UMSU Enviro is working sustainable thinking into everyday life so we can ensure that our little blue planet stays beautiful.

You also have Creative Arts, Union House Theatre and Media departments dedicated to helping you find your light.



[umsu.unimelb.edu.au](http://umsu.unimelb.edu.au)



Jacinta



Lydia

## ACTIVITIES

### **We're your friendly party people.**

Fancy a free BBQ with beer, cider, soft drink and a band? A massive Oktoberfest party? Comedy night? Partying in Union House? We have you covered.

Like us on Facebook so you don't miss out on anything and see you at one of our events!

Level 1, Union House  
activities@union.unimelb.edu.au  
facebook.com/umsuactivities

[umsu.unimelb.edu.au/activities](https://umsu.unimelb.edu.au/activities)



## CREATIVE ARTS

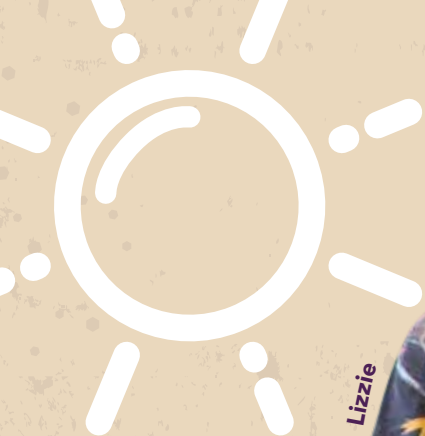
### Come art with us!

We're here to help you make the art you want to make. We'll point you in the right direction for meeting new people, collaborators, grants, events and other exciting activities.

We look forward to creating with you!

Level 1, Union House  
arts@unimelb.edu.au  
facebook.com/umsuartsdepartment

[umsu.unimelb.edu.au/arts](https://umsu.unimelb.edu.au/arts)



Lizzie

Kate

# ENVIRONMENT

**From supporting action on climate change at a national level to initiating and advocating for increased campus sustainability.**

There are so many opportunities to get involved!

- Bike Co-op servicing
- Community Garden workshops
- Fossil Free MU campaigns
- Green Screen movies
- Play With Your Food dinner events

Level 1, Union House  
environment@union.unimelb.edu.au  
facebook.com/umsuenviro  
twitter.com/umsuenviro

[umsu.unimelb.edu.au/enviro](https://umsu.unimelb.edu.au/enviro)



# GEORGE PATON GALLERY

**Union House contains several gallery and arts spaces, so it's the perfect canvas for your creativity!**

## **Arts Lab**

Like your primary school art room — without annoying teachers. Any student can book it for an artistic purpose, whether you want to make badges, paint banners or do some spoken word.

## **Gallery**

The George Paton Gallery is focused on student exhibitions and is completely free to enter. Get in touch if you have a project idea, or just join us and the artists for art, wine and cheese!

Level 2, Union House  
8344 5418  
gpg@union.unimelb.edu.au  
facebook.com/georgepatongallery

[umsu.unimelb.edu.au/gallery](https://umsu.unimelb.edu.au/gallery)



**Amie**



**James**



**Mary**



**Alex**

## MEDIA

### Hey sparkly starlight!

We are here to help you get your creativity out there.

We'd be nothing without your words, art and voice.

Tune in, turn on or contribute to

- Above Water
- Farrago Magazine
- Farrago Video
- Radio Fodder

farragomedia2017@gmail.com  
facebook.com/farragomagazine  
twitter.com/farragomagazine  
instagram.com/farragomagazine  
youtube.com/farragomagazine  
snapchat @farragomagazine

[umsu.unimelb.edu.au/media](https://umsu.unimelb.edu.au/media)





# Mudfest

## MUDFEST

**MudFest is the biennial arts festival run by UMSU.**

From humble beginnings in 1990, it has grown into the largest student arts festival in Australia. As a festival committed to showcasing diverse and original artwork, MudFest has become an important part of Melbourne's emerging arts scene.

Consistently attracting crowds in the thousands, MudFest is the perfect platform for students to find an audience for their practice. Since 2011, the festival has been run by students with the assistance of industry professionals.

Level 1, Union House  
arts@unimelb.edu.au  
facebook.com/umsuartsdepartment

[umsu.unimelb.edu.au/arts](http://umsu.unimelb.edu.au/arts)



# ROWDEN WHITE LIBRARY

**The Rowden White Library (AKA the Rowdy) is not for studying. Let's get that straight.**

It's for enjoyment. Your enjoyment. We have new stuff all the time. And it's all free.

- Books and e-books: general fiction, scifi/fantasy, crime, romance, or non fiction
- Comics, graphic novels, manga, superheroes
- Foxtel TV: Game of Thrones, Walking Dead, Westworld, etc.
- Computers
- Magazines
- Music
- DVDs

The computers are open access and there's stuff at lunchtime. Stand up comedy. Short drama performances. Club activities. Or there's comfy chairs and bean bags for sleeping if you've had a big weekend.

Level 2, Union House  
8344 6967  
9am to 7pm, Monday to Thursday  
9am to 6pm Fridays  
rwl@union.unimelb.edu.au

[umsu.unimelb.edu.au/library](https://umsu.unimelb.edu.au/library)





# UNION HOUSE THEATRE

We run an epic co-curricular theatre program and have two incredible performance venues.

UHT supports students who are

- Performers
- Playwrights
- Technicians
- Designers
- Directors
- Producers

And more!

**Don't be shy! Whether you're first year, second year or PhD — everyone is welcome.**

Level 1, Union House  
8344 6975

[facebook.com/unionhousetheatre](https://facebook.com/unionhousetheatre)  
[instagram.com/unionhousetheatre](https://instagram.com/unionhousetheatre)

[umsu.unimelb.edu.au/theatre](https://umsu.unimelb.edu.au/theatre)

# HOW TO UNI



You have landed at the centre of the Uni-verse, now what?

Whether you are new to this galaxy or you are an experienced space cadet, this section will help you understand how to uni properly.

So don't let aliens guide you down the wrong wormhole. Here's a list to help your journey into outer space.

- **WHERE TO EAT**
- **HOW TO GET AROUND**
- **BBQ, CAMPING AND AV HIRE**
- **IMPORTANT DATES**
- **S.O.S. CONTACTS**



[umsu.unimelb.edu.au](http://umsu.unimelb.edu.au)



# DISCOVER MELBOURNE

**So you've landed your ship on planet Melbourne for the very first time — now what?**

For a newbie, Melbourne (AKA Melbs) can be pretty daunting, but beyond the concrete and café chic you'll find a million reasons why humans keep voting this multicultural metropolis as one of the **best places to live on Earth**.

You'll often find yourself stumbling across free performances at Fed Square, or stopping to watch ridiculously talented buskers in Bourke St. For those actively seeking out our **cultural marvels**, ACMI, the State Library and the NGV all have free standing collections with world-famous exhibits.

Cruise boutique whiskey bars in Fitzroy, or take a moment to chill under the Dalai Lama tree in the Carlton Gardens. Spend hours in mazes of **alleyways** full of street art and finish off with an authentic bowl of pho. No matter which corner of the galaxy you're from, there's something for everyone.

This city also knows how to put on a show, so look out for **festivals** like Melbourne Music Week, Moomba, Melbourne International Film Festival and the Comedy Festival!

If you've got space in your squad, make sure you join an UMSU club or three so you've always got someone to adventure with.

*The "Answer to the Ultimate Question of Life, the Universe, and Everything"*



## GET AROUND

**While the commute for those living in the suburbs is often long and tedious (but a great opportunity to do your readings!) getting around the city once you're there is relatively easy.**

Melbourne has three forms of public transport: trams, trains and buses. These run every day and you can find schedules online: [ptv.vic.gov.au](http://ptv.vic.gov.au). Check out the Journey Planner function on the PTV website — type in your starting point and destination and the entire journey will be mapped out for you. **Very handy!** Allow for delays if you plan to travel in peak hour.

To travel on public transport, you will need a **Myki**. These can be bought and topped up at 7-Elevens, Australia Post offices and train stations. Travelling on a concession Myki requires a PTV Concession Card or a Healthcare Card, not just your student card.

**Trams** are an effective way to get around, and most of the CBD is covered by a free tram zone. This zone doesn't extend to Parkville campus though, so make sure you 'touch on' your Myki if you're getting off at the uni Swanston St stop — ticket inspectors love hanging out there!

If you live close by, **riding a bike** is a cheap way to get around Melbourne. Known for its bike culture, there are many Bike Share outposts, including one right in front of Union House: [melbournebikeshare.com.au](http://melbournebikeshare.com.au). Make sure you grab a free helmet and get familiar with the road rules!



## GET STUFF

### **The Info Desk in Union House is your HQ for supplies in the Uni-verse.**

Even the most seasoned space travellers need to stop off sometimes to drop off their cargo. Rent a locker for us for a whole or half earth year!

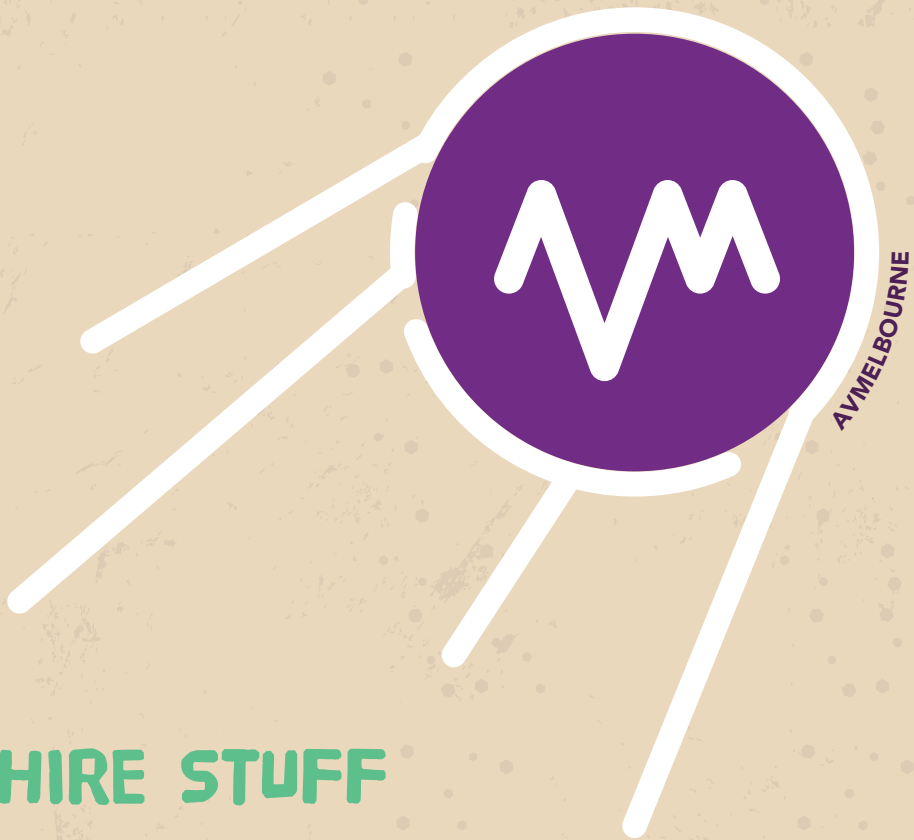
Got human friends that you'd like to impress with a BBQ? Talk to us.

Got mad science experiments? We'll kit you out with lab coats too.

If this doesn't sound like your thing, rent out some camping gear from the Info Desk and head out of town for a night under the stars.

Ground floor, Union House  
University of Melbourne  
8.30am to 5pm, Monday to Friday  
8344 6966





## HIRE STUFF

AVMelbourne are specialists in event production. We hire out AV equipment with a special discount for all UniMelb students and UMSU clubs.

Come to us for

- Festivals
- Concerts
- Parties and sound systems
- Panel sessions
- Exhibitions
- Conferences
- Symposiums
- DJ equipment
- Lighting
- Staging
- Projectors and screens
- Loudspeakers
- Microphones
- Mixers

Level 3, Union House  
info@avm.unimelb.edu.au  
8344 4830

[avm.unimelb.edu.au](http://avm.unimelb.edu.au)



# HOUSEMATES

**Communal living can be out of this world, but if you don't planet out beforehand you can end up in the armpit of the universe.**

## **A stellar cast**

Choosing housemates you already know is a good start — but that doesn't necessarily mean your best mates! You want someone reliable, who'll pay their rent on time and who will share in the household chores. Try

- [Flatmates.com.au](http://Flatmates.com.au)
- Fairy Floss Real Estate (Facebook group)
- [Flatmatefinders.com](http://Flatmatefinders.com)
- Union House noticeboards

## **Personal space**

Sharehouses aren't all about impromptu bathroom dance parties and Game of Thrones binges. Make sure to respect each other's space, because you'll be seeing PLENTY of each other once you move in. If bad vibes occur make sure to talk them out, and never write passive aggressive post-it notes.

## **Seek help**

Visit the Tenants Union of Victoria ([tuv.org](http://tuv.org)) or Consumer Affairs for issues with dodgy landlords or rental concerns. If you still need help, the UMSU Advocacy service can set you on the right course.



## REFUEL

### **G(ASTRONOMY) — Foodie tips that won't lead to a budget black-hole.**

If you're not being fed properly, you're going to feel spaced out in lectures. Thankfully the Uni-verse is a foodie heaven, with world class Italian located just around the Lygon Street corner, a concentration of hipster cafés and lots of cheap sushi.

Food is a great way to make friends. Invite that quirky tutorial contributor for a coffee — you won't regret it!

#### **Budget skyrocketing?**

UMSU Welfare offers free breakfasts (bacon, pancakes, fruit, cereal — the lot!) on Thursdays while Activities run free band and bbq events every Tuesday. Maximise your sausage intake by checking out the daily free BBQs from UMSU Clubs. The Co-op in Union House is also student run and full of cheap veg/vegan options to fill you up.

#### **Caffeine**

Coffee is an important ritual of university life, but don't worry if it's not your cuppa tea. Check our House of Cards for coffee with a conscience, Carte Crêpes for Dalek-table sweet treats, or head to Standing Room or Seven Seeds for all your cold brew, filter and espresso needs.

# IMPORTANT DATES 2017

JANUARY	
3 January to 26 February	<b>Summer Term</b>
FEBRUARY	
21 February to 3 March	Summer Festival (aka Orientation)
27 February to 28 May	<b>Semester 1 (12 teaching weeks)</b>
APRIL	
14 to 18 April	Easter holiday
14 to 23 April	Easter Non Teaching Period
25 April	ANZAC Day holiday
MAY	
29 May to 2 June	SWOT Vac
JUNE	
6 to 23 June	<b>Exams — good luck!</b>
12 June	Queen's Birthday holiday
JULY	
3 to 9 July	Non-teaching period
7 July	Results final release date
13 to 19 July	Special/Supplementary Examinations
19 July	Winter Festival (aka Orientation)
24 July to 22 October	<b>Semester 2 (12 teaching weeks)</b>
AUGUST	
20 August	Open Day - Parkville and Southbank

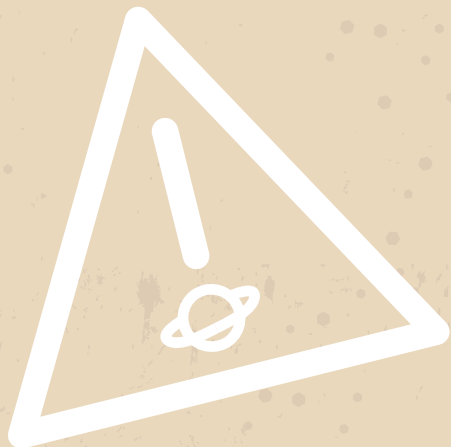


SEPTEMBER	
25 September to 1 October	Non Teaching Period
OCTOBER	
23 to 27 October	SWOT Vac
30 October to 17 November	<b>Exams — good luck!</b>
DECEMBER	
1 December	Results final release date
7 to 14 December	Special/Supplementary Examinations
25 December to 2 January 2018	Summer holiday (exact dates to be confirmed)

**Census dates are important** because they're the last date to withdraw from a subject without remaining liable to pay for the subject, and without it appearing on your academic transcript. Every subject offered by the University has a census date.

For more information about Census dates, withdrawing from a subject or course, please visit

[students.unimelb.edu.au/admin/census-dates](https://students.unimelb.edu.au/admin/census-dates)



## S.O.S. CONTACTS

**EMERGENCY SERVICES**  
**(Ambulance, Fire, Police)**

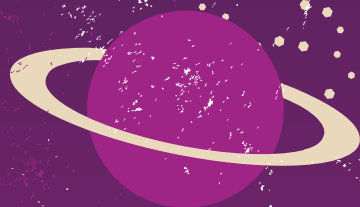
**DIAL**  
**000**

### **On campus**

Campus Security	<b>8344 6666</b>
First Aid	<b>8344 5415</b>
Union House Security	<b>8344 0077</b>
UMSU Advocacy Service	<b>8344 6546</b>
UMSU Legal Advice Line	<b>0468 720 668</b>
University Childcare	<b>83449621</b>
University Counselling & Psychological Services	<b>8344 6927</b>
University Health Service	<b>8344 6904</b>
University Safer Community Program	<b>9035 8675</b>

## Off campus

Beyond Blue (anxiety and depression support)	<b>1300 22 4636</b>
Eating Disorders Victoria	<b>1300 550 236</b>
Emergency Accommodation	<b>13MELB (13 6352)</b>
Direct Line (24 hour drug and alcohol telephone counselling)	<b>1800 888 236</b>
Financial Counselling Service (Carlton/Fitzroy)	<b>9349 2562</b>
Gambler's Help (problem gambling)	<b>1800 858 858</b>
Headspace (mental and health wellbeing support, information and services to young people)	<b>9417 0150</b>
Legal aid	<b>9269 0120</b>
LifeLine (crisis support and suicide prevention)	<b>131 114</b>
MensLine (professional phone and online counselling for men)	<b>1300 78 99 78</b>
Online chat counselling (24 hour)	<b>1800respect (1800 737 732)</b>
Police Assistance (non emergency)	<b>8379 0800 for North Melbourne. In all other suburbs, call your local station.</b>
Safe Steps (family violence response centre)	<b>1800 015 188</b>
Sexual Assault Crisis Line (SACL)	<b>1800 806 292</b>
Suicide Line	<b>1300 651 251</b>



# UMSU

UNIVERSITY OF MELBOURNE  
STUDENT UNION



UMSU@UNIMELB

